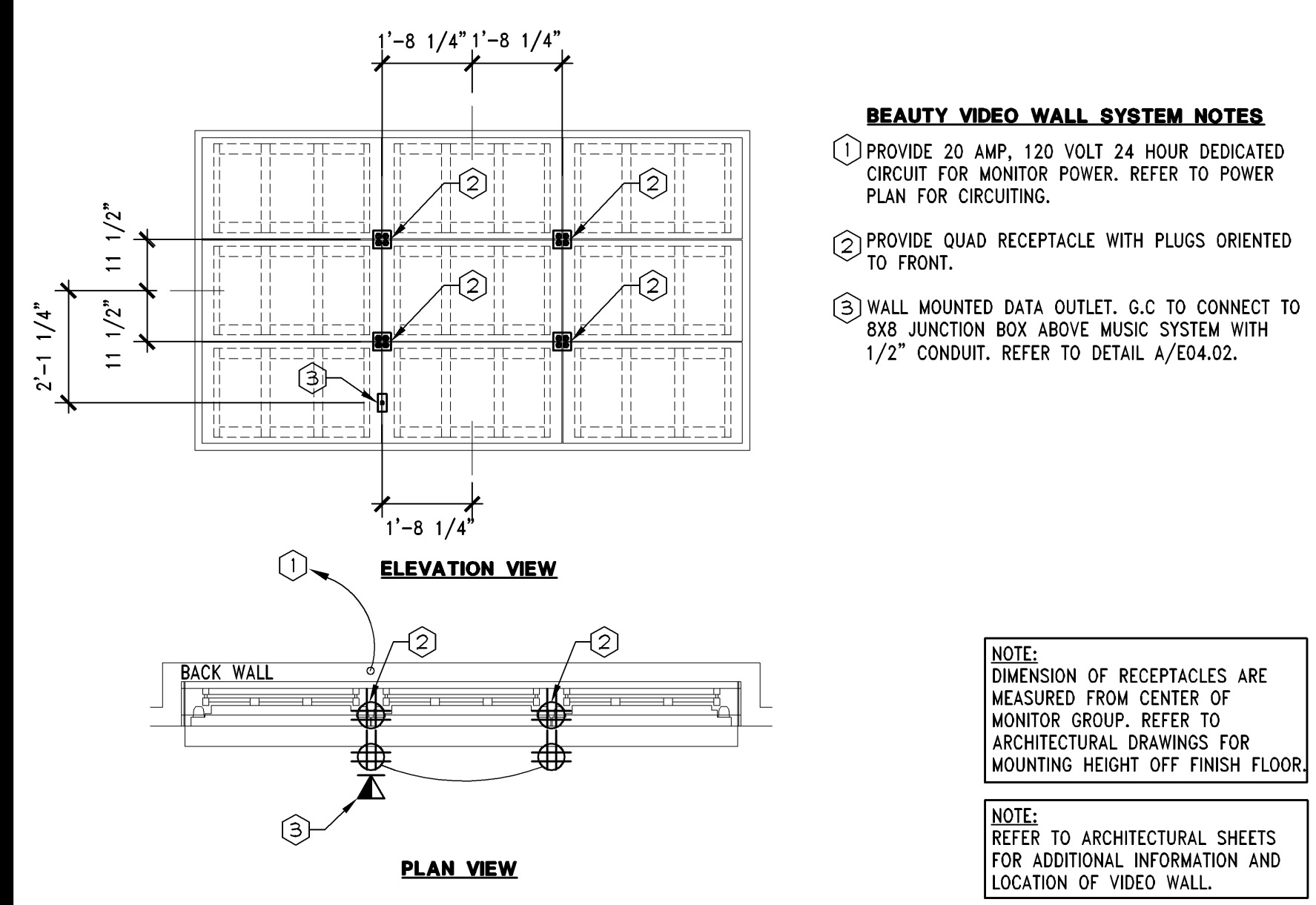
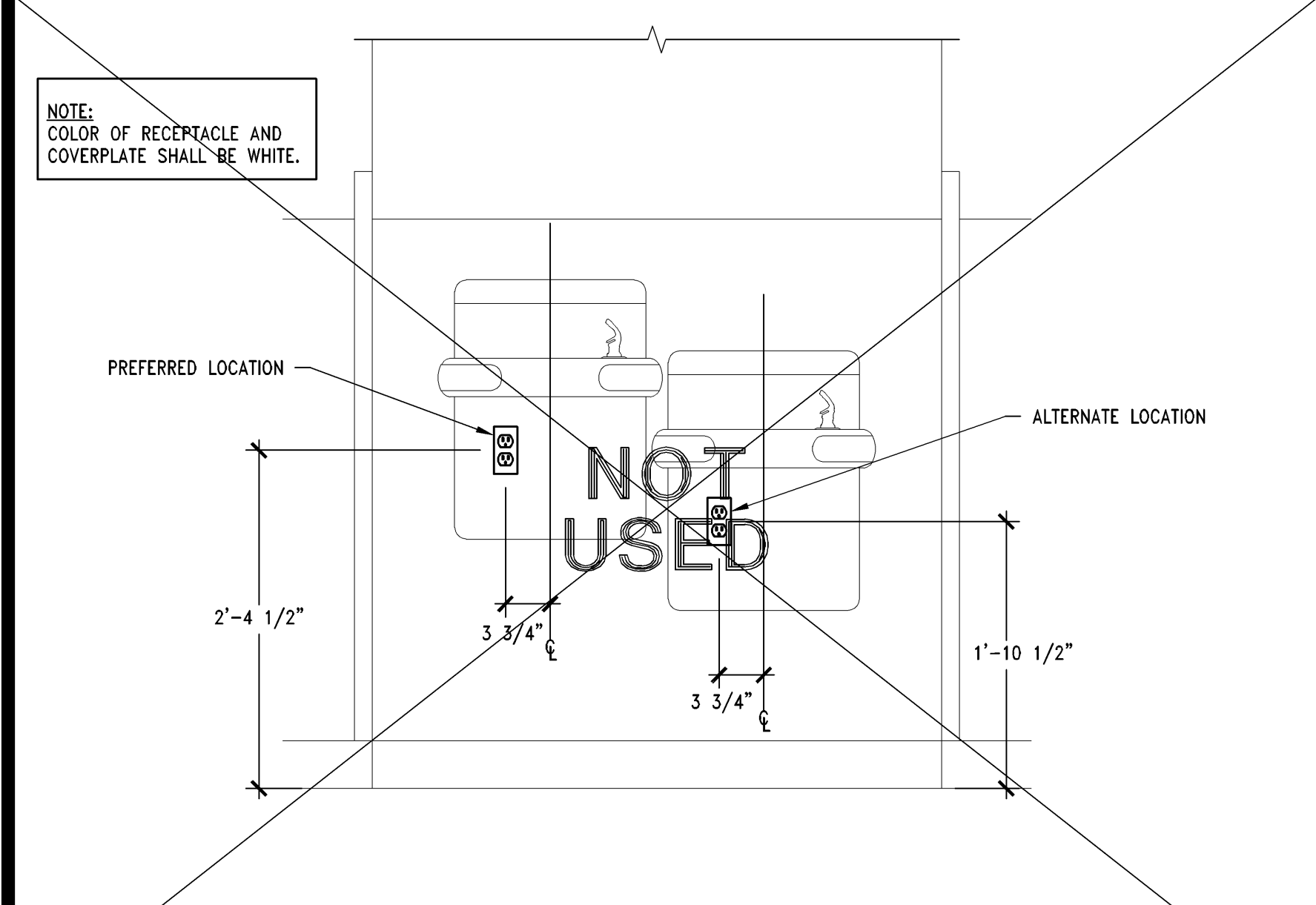


| | | | | | |
|---|---|---|--|------------------------------|--|
| A/C AC AFF AHJ AIC AMP, A | AIR CONDITIONER ALTERNATING CURRENT ABOVE FINISHED FLOOR AIR HANDLING UNIT AMPERE INTERRUPTING CAPACITY AMPERE | FA FIXT FLA | FIRE ALARM FIXTURE | N.C. NF N.I.C. N.O. | NORMALLY CLOSED NON FUSED NOT IN CONTRACT NORMALLY OPEN |
| C C.B CCTV CIRC. COL. COND CONT CU | CONDUIT CIRCUIT BREAKER CLOSED CIRCUIT TELEVISION CIRCUIT COLUMN CONDUIT CONTINUED GROUND COPPER | G GFI | GROUND FAULT INTERRUPTER | OC OL | ON CENTER OVER LOAD |
| DET DF DIA DISC. DISTR DWG | DETAIL DRINKING FOUNTAIN DIAMETER DISCONNECT DISTRIBUTION DRAWING | HP HV HZ | HORSEPOWER HIGH VOLTAGE HERTZ | P PA PE PNL PWR | POLE PUBLIC ADDRESS PHOTO ELECTRIC PANEL POWER |
| (E) EL ELEC EWC EX EXO EXT LOC | EXISTING EXHAUST FAN ELECTRICAL ELECTRIC WATER COOLER EXISTING EXTERNALLY OPERATED EXTERIOR LOCATION | IP IFS IG | INTERCOM PHONE INTERGATED FACILITY SYSTEM ISOLATED GROUND | RM RTU | ROOM RAIN TIGHT ROOF TOP UNIT |
| | | J- BOX | JUNCTION BOX | SW BD | SWITCH SWITCHBOARD |
| | | KVA | KILOVOLT-AMPS | TC TELE TYP | TIMECLOCK TELEPHONE TYPICAL |
| | | LCL LTG LV | LONG CONTINUOUS LOAD LIGHTING LOW VOLTAGE | V | VOLT |
| | | MAX MCA MCC MCB MECH MLO MH MOCP | MINIMUM MINIMUM CIRCUIT AMPACITY MOTOR CONTROL CENTER MAIN CIRCUIT BREAKER MECHANICAL MAIN LUG ONLY MOUNTING HEIGHT MAXIMUM OVER CURRENT PROTECTION | WP | WEATHERPROOF |

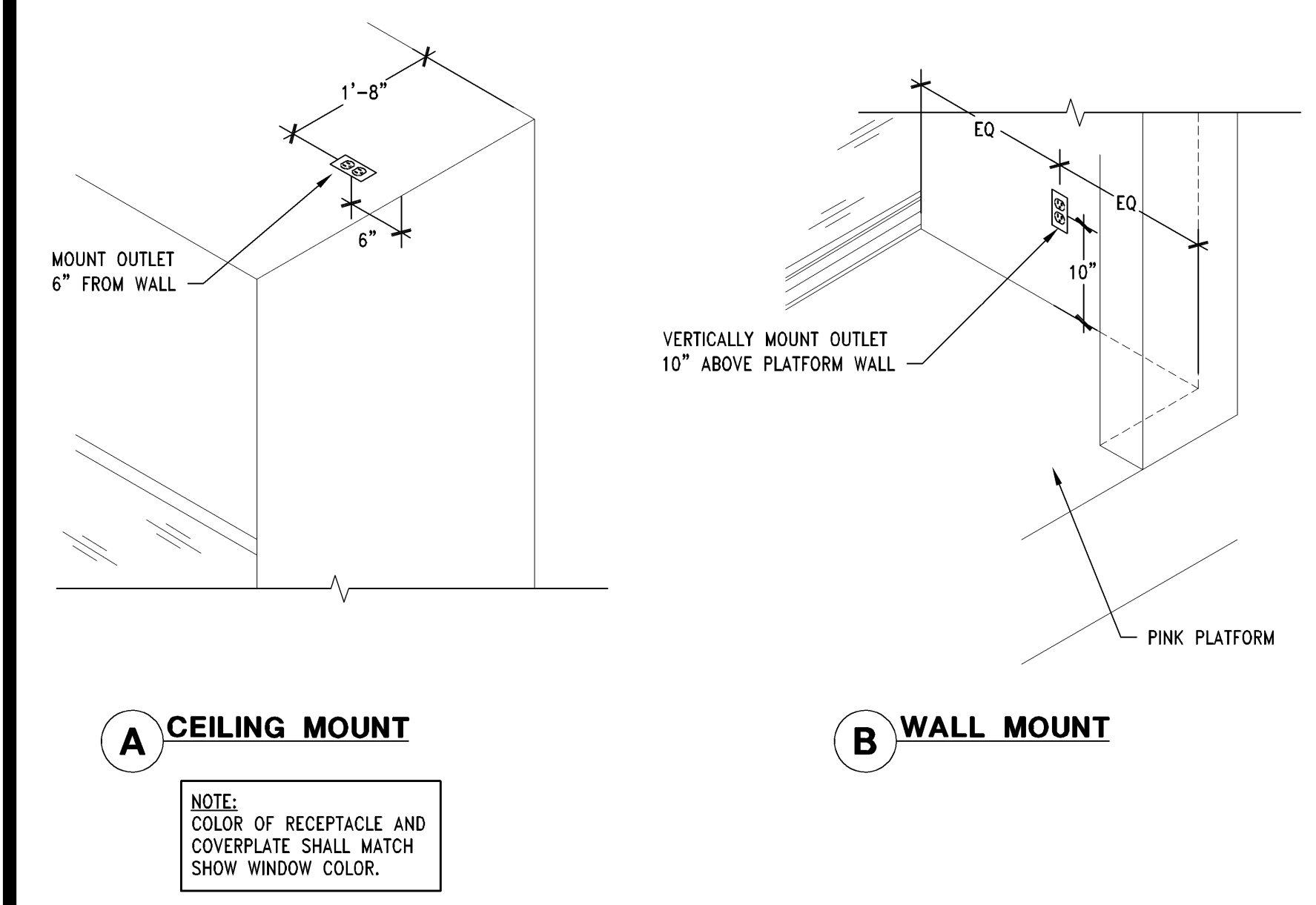
| | | |
|--------------------------|--------------------|----------|
| ELECTRICAL ABBREVIATIONS | 3/8" = 1'-0" | S |
| | 01D-E0403-E00-ABBR | 09/06/13 |



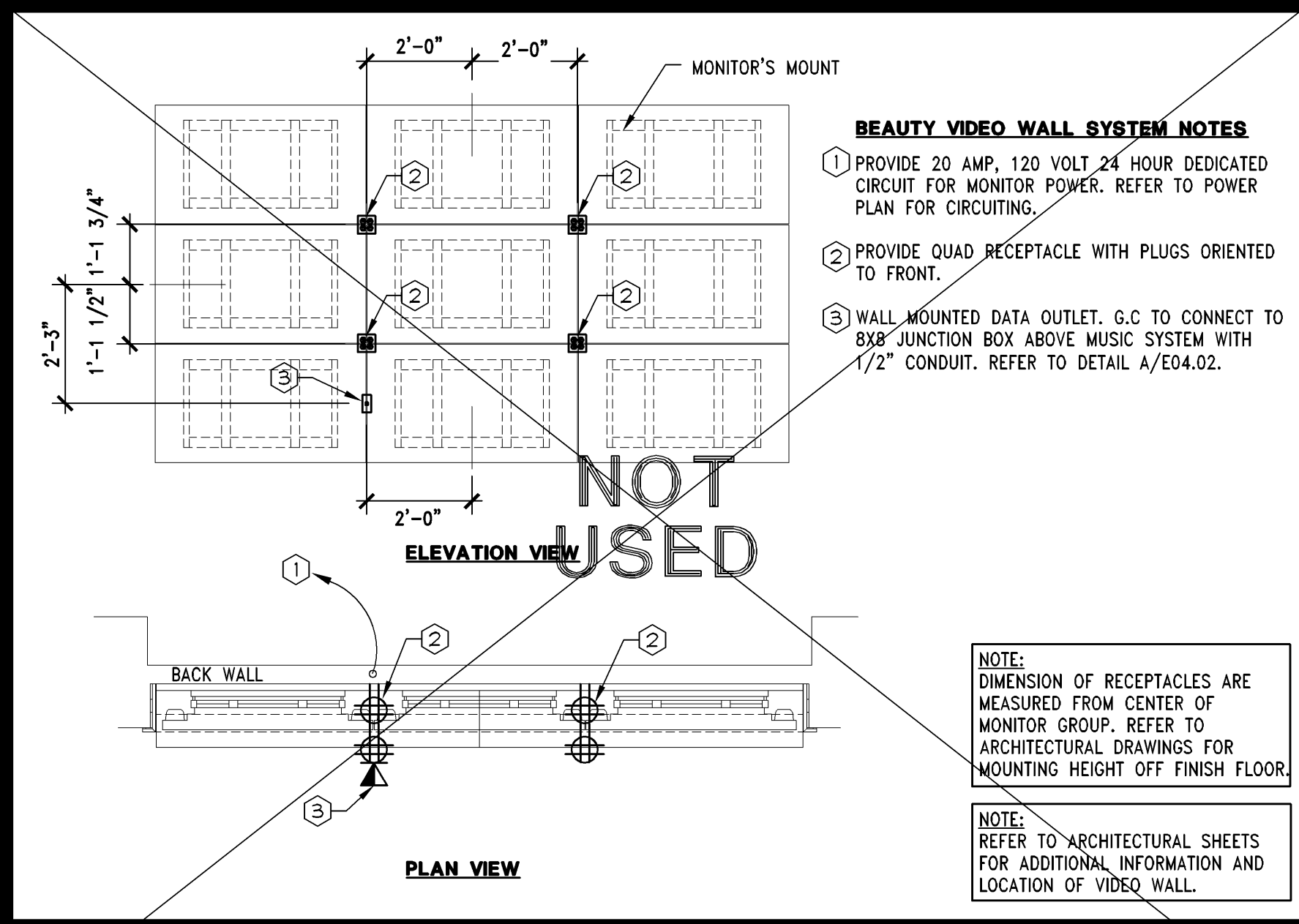
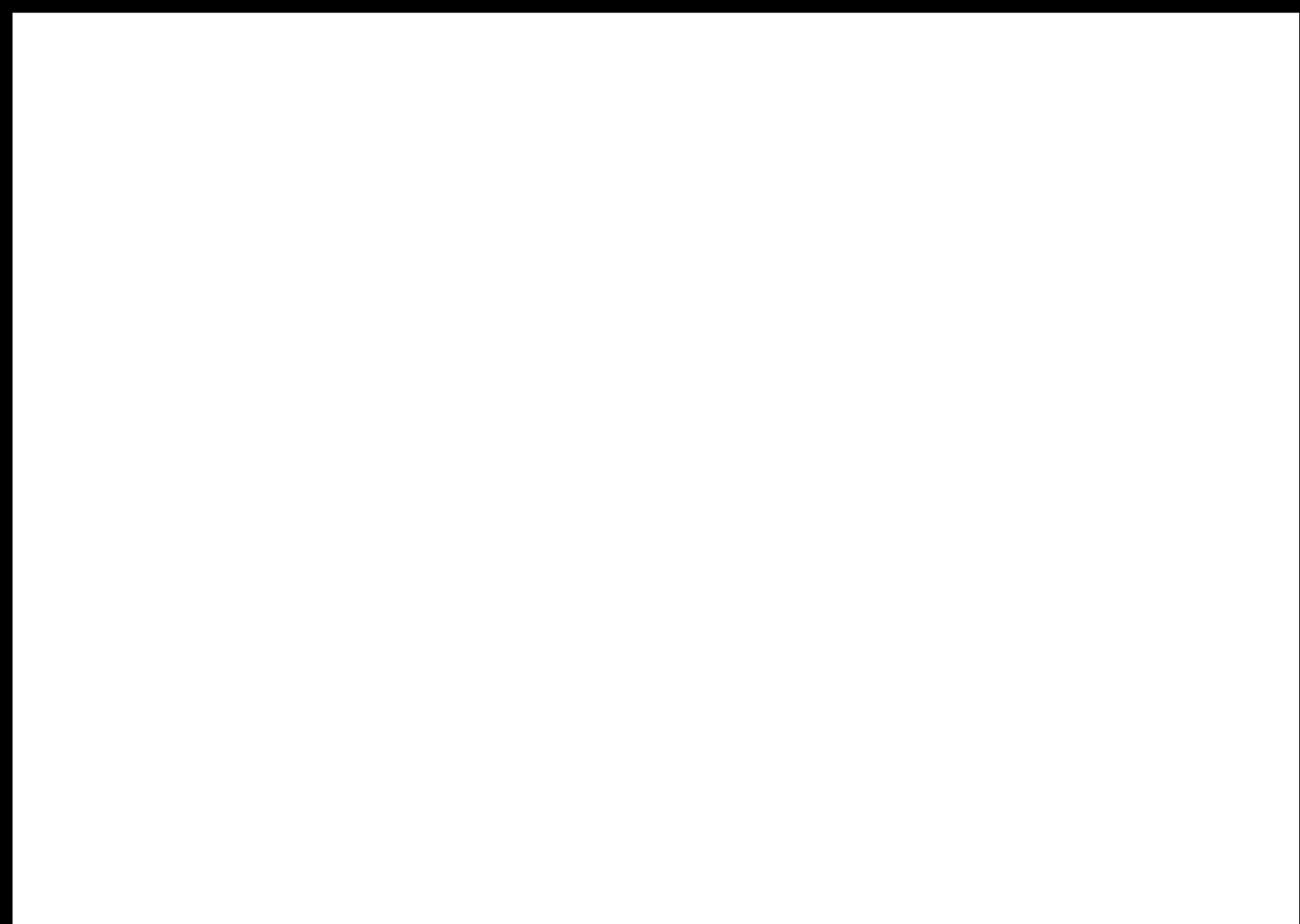
| | | |
|--|--------------------|----------|
| VIDEO WALL DETAIL 46" - (WALL MOUNTED) | 3/8" = 1'-0" | M |
| | 05D-E0403-E00-VVWM | 04/04/14 |



| | | |
|-------------------------|--------------------|----------|
| DRINKING FOUNTAIN POWER | 1" = 1'-0" | H |
| | 05D-E0403-H00-DKFT | 05/22/13 |

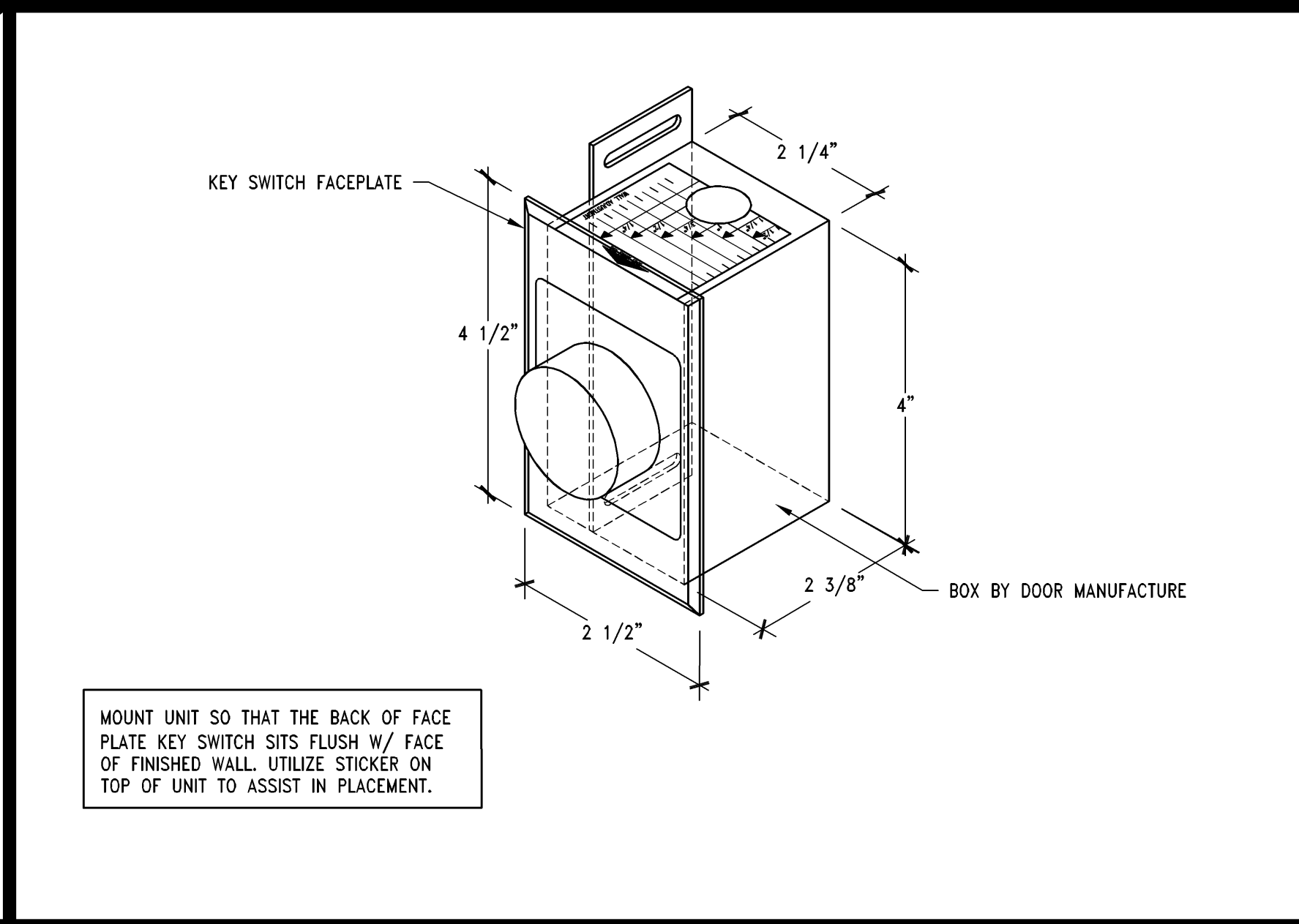


| | | |
|------------------------------------|--------------------|----------|
| PINK SHOW WINDOW RECEPTACLE DETAIL | 3/4" = 1'-0" | D |
| | 05D-E0403-D00-RECP | 10/17/12 |

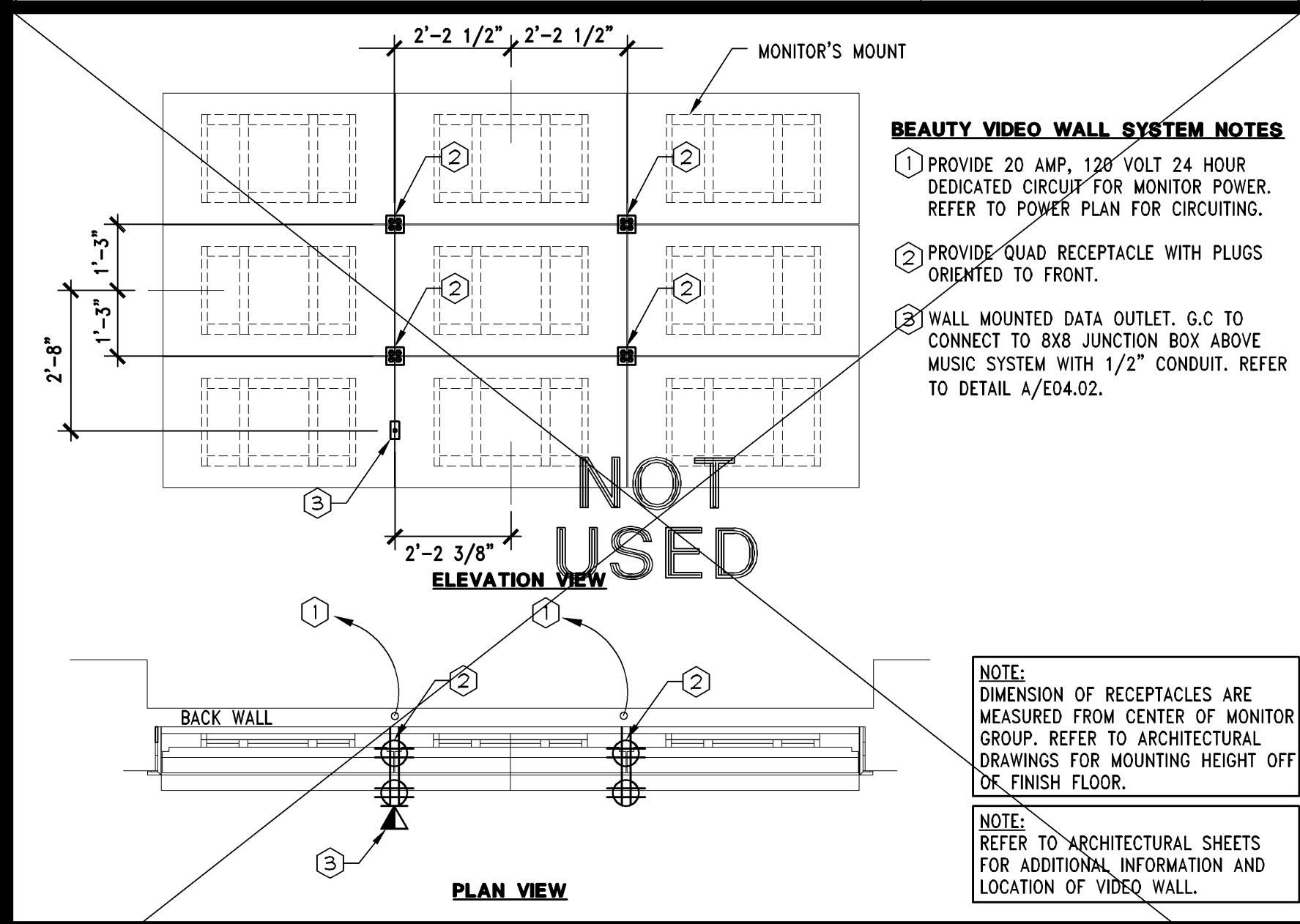


| | | |
|--|--------------------|----------|
| VIDEO WALL DETAIL 55" - (WALL MOUNTED) | 3/8" = 1'-0" | L |
| | 05D-E0403-E01-VVWM | 04/04/14 |

| | | |
|---------------------------------|--------------------|----------|
| STOREFRONT DIMMING SYSTEM ELEV. | 1" = 1'-0" | G |
| | 05D-E0403-G00-SDIM | 08/17/13 |

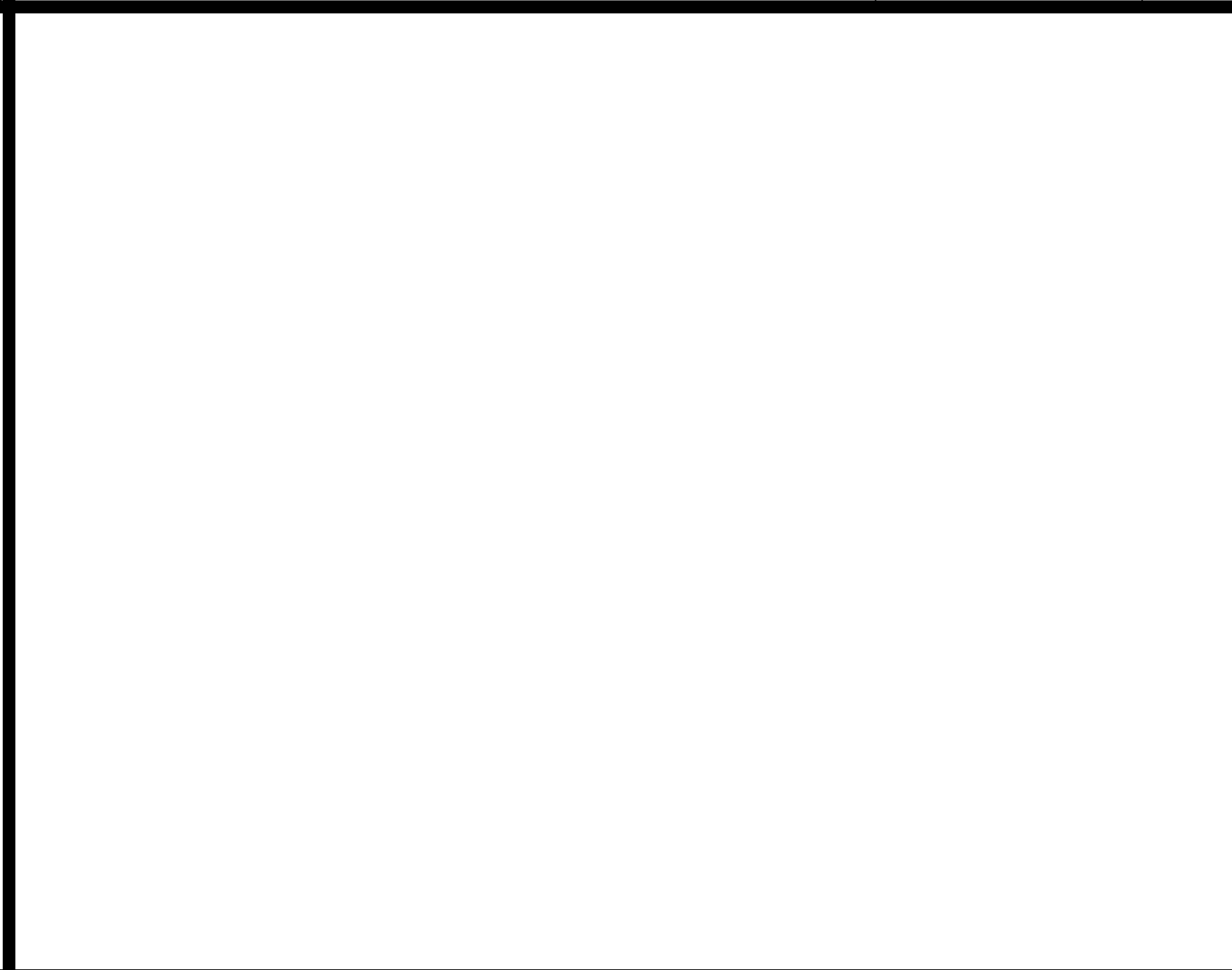
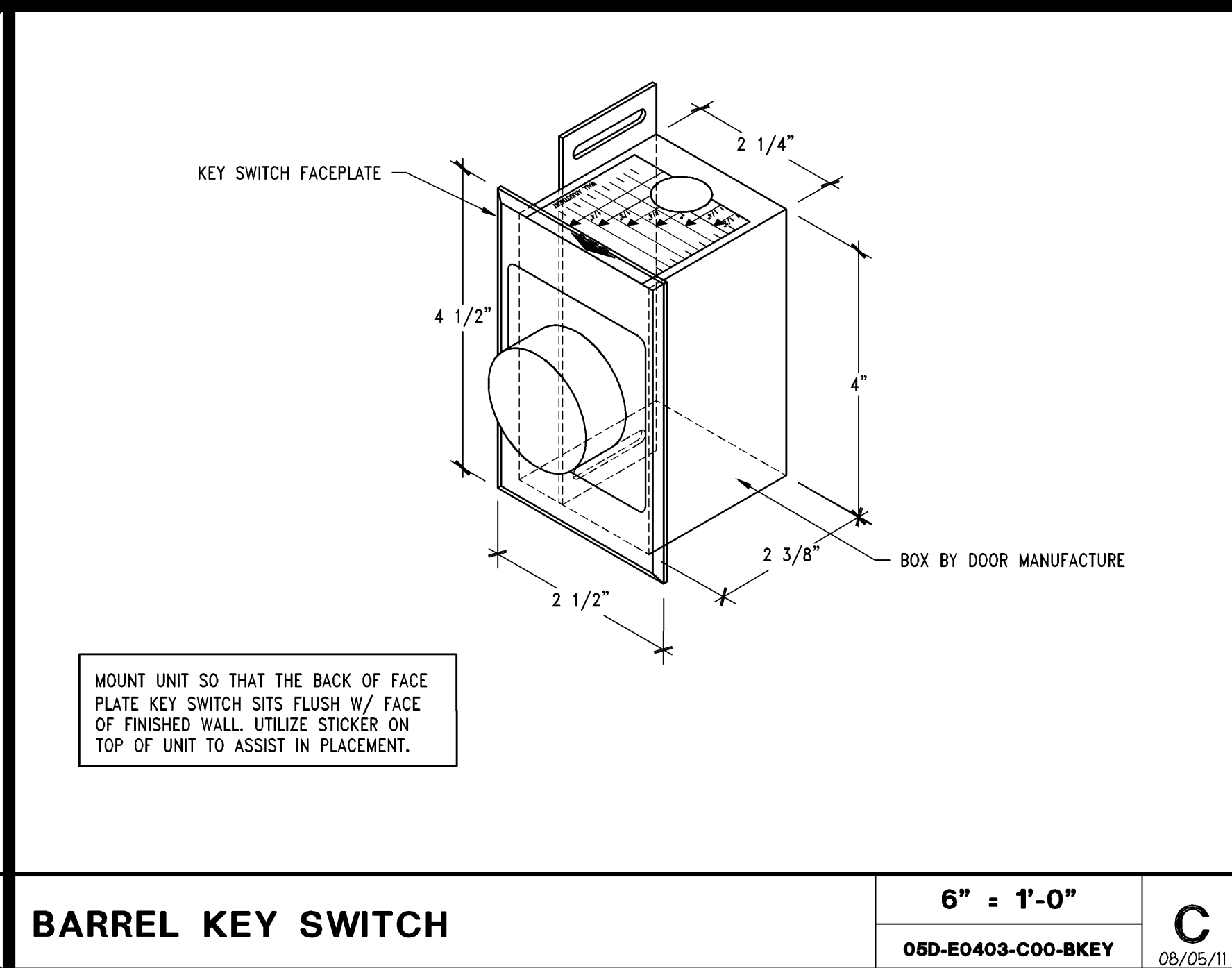


| | | |
|-------------------|--------------------|----------|
| BARREL KEY SWITCH | 6" = 1'-0" | C |
| | 05D-E0403-C00-BKEY | 08/05/11 |



| | | |
|--|--------------------|----------|
| VIDEO WALL DETAIL 60" - (WALL MOUNTED) | 3/8" = 1'-0" | K |
| | 05D-E0403-E02-VVWM | 04/04/14 |

| | | |
|--|--------------------|----------|
| SENSORMATIC SYSTEM - AMS2020 ANTENNA (ABOVE CEILING OR VOID SPACE) | 3/8" = 1'-0" | A |
| | 05D-E0403-A00-SENS | 04/04/14 |



LARSON BINKLEY

Larson Binkley, Inc.
310 W 20th Street, Suite 200
Kansas City, Missouri 64101
Kentucky Certificate of
Authorization Number 1127

1 816-997-9601
F 816-997-9602
larsorbinkley.com

Limited brands

LIMITED STORE PLANNING, INC.
d/b/a STORE DESIGN & CONSTRUCTION
Three Limited Parkway • Columbus, Ohio 43230
Telephone: 614.415.7000 • Fax: 614.415.7349

010501726

PINK VICTORIA'S SECRET

3401 NICHOLASVILLE RD

LEXINGTON, KY 40503

SPACE # 1-904

SCOPE: DESIGN TYPE: LS&C PROJECT #:

REVISIONS:

| REVISIONS: | DATE: |
|---|-------|
| ELITE CONSTRUCTION GROUP LAKE JACKSON, TX PHONE: 979-275-6712 NOTE: THESE PRINTS HAVE BEEN REDUCED BY 50 PERCENT SCALE WILL BE 50 PERCENT OF WHAT IS NOTED ON PLANS | |

DATE ISSUED: 09-05-2014

DESIGNED BY: ST

DRAWN BY: ST

CHECKED BY: ATP

ELECTRICAL DETAILS

DRAWING NUMBER: E04.03